

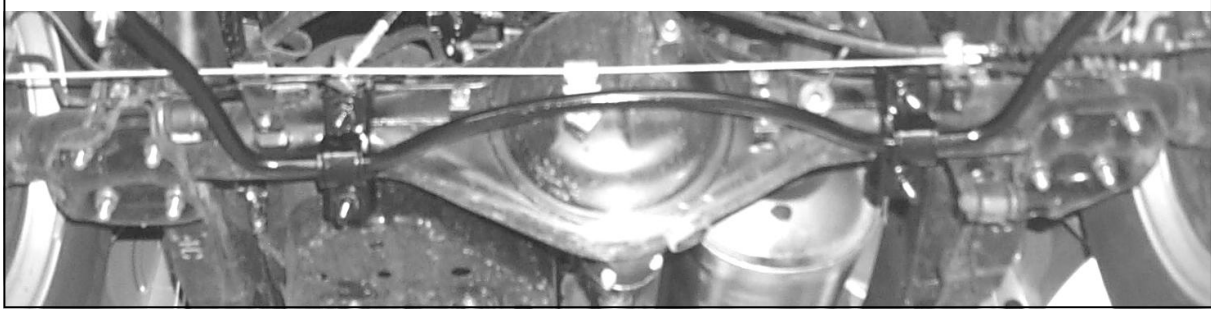
# Hellwig PRODUCTS.com

559-734-7451 800-367-5480 FAX 559-734-7460

## INSTALLATION INSTRUCTIONS

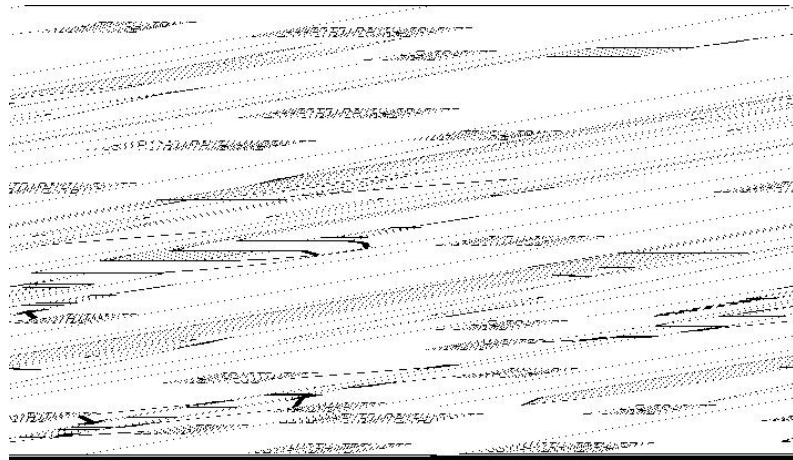
### Rear Stabilizer Bar Toyota Tacoma 2x4

Thank you for purchasing a quality Hellwig Product.



# Hellwig PRODUCTS.com

559-734-7451 800-367-5480 FAX 559-734-7460



## TORQUE TABLE

**BOLT SIZE:** 3/8" = 20-30 ft. lbs. - 7/16" = 35-45 ft. lbs. - 1/2" = 50-70 ft. lbs. - 9/16" = 70-90 ft. lbs.

**SAFETY: BEFORE STARTING YOUR INSTALLATION, BE SURE TO SET PARKING BRAKE AND CHOCK TIRES.**

**NOTE: TO EASE INSTALLATION AND TO PROPERLY ADJUST BAR, THE WEIGHT OF THE VEHICLE MUST BE ON THE SUSPENSION, AS IF DRIVING DOWN THE ROAD. DO NOT RAISE VEHICLE BY FRAME.**

**NOTE: THIS UNIT IS DESIGNED TO MOUNT TO THE BOTTOM REAR OF THE AXLE TUBES WITH THE ARMS OF THE BAR TOWARDS THE REAR OF THE VEHICLE.**

**NOTE: THIS KIT INCLUDES LOCK NUTS WHICH REQUIRE TIGHTENING WITH A WRENCH AFTER BEING STARTED BY HAND.**

1. As per the diagram, Place the D-shaped poly bushings onto the straight areas of the sway bar on each side of the center hump.
2. Hold the bar up to the axle and locate the position on the axles to mount to U-bolts. Be sure to put the U-bolts under any brake lines, wires or hoses on the axle to avoid any possible damage. The threads of the U-bolts will point downward and slightly rearward.
3. Place the saddle brackets onto the U-bolts on the axles. Place the U-plates over the D-bushings on the bar and attach the bar to the U-bolts and saddles with flat washers and nuts provided. LEAVE LOOSE AT THIS TIME to allow for adjustments later.
4. As per the Photos and Diagrams, assemble the end links between the ends of the short end of the Z-brackets. Tighten only until the acorn nuts bottom. DO NOT OVER TIGHTEN.
5. Raise the bar ends upward to be about level with frame. Rotate the Z-brackets around to locate the area on the frame to attach the pinch brackets. This should be to the rear of the end link on the drivers side and forward of the end link on the passenger side. See the Diagram to properly attach the frame pinch brackets to the frame.
6. Use the 9/16" mounting hardware and attach the upper L-shaped pinch bracket, lower pinch bracket and the Z-bracket to the frame. See Diagram. The pinch bolt will be just inside the frame. LEAVE LOOSE to allow for adjustment. Move any wires or hoses inside the frame out of the way of the pinch bracket to avoid any damage.
7. Align the bar side to side through the bushings to be centered as possible. Rotate the bar front to rear by rotating the U-bolts on the axle to avoid the emergency brake mechanism. Adjust the frame brackets so end links are as straight up and down as possible. Be sure the bar does not contact the differential, Drivers side shock, the leaf spring, or emergency brake hardware. The Z-brackets can be rotated to any direction to best align the end links on your particular vehicle.
8. Torque all of the mounting hardware to the specified rate. Bounce the vehicle checking for clearance on all undercarriage components ie: exhaust, shocks etc. Recheck your installation periodically on a regular basis.

**ATTENTION INSTALLER: BE SURE THE CUSTOMER RECEIVES THIS INSTRUCTION SHEET, ALL IMPORTANT NOTE CARDS, WARNING CARDS, AND THE WARRANTY FORM.**

# Hellwig PRODUCTS.com

559-734-7451 800-367-5480 FAX 559-734-7460

## PARTS LIST KIT #7666

PART #	QTY	DESCRIPTION
20217667	1	3/4" SWAY BAR
111000496	2	3/4" I.D. POLY BUSHING
20800430	2	U-BOLT
20800871	2	SADDLE BRACKET
118000672	2	(7/16" X3-1/8" X 5-5/8") ROUND U-BOLT
20800816	2	SHEARED PLATE
20800817	2	INNER FRAME BRACKET
20800353	2	Z-BRACKET
101500010	2	7/16" X 4-1/2" END LINK
<b>125030336</b>	<b>1</b>	<b>BUSHING BAG # BG-336</b>
111000389	8	END LINK BUSHING
<b>125020045</b>	<b>1</b>	<b>SMALL PARTS BAG # BG-45</b>
20800723	2	END LINK SPACER
105621055	2	9/16" HEX NUT
101500056	2	9/16" X 2-1/2" CAP SCREW
102620059	4	9/16" FLAT WASHER
107401042	6	7/16" LOCK NUT
102420041	12	7/16" FLAT WASHER
135000324	1	INSTRUCTION SHEET R-7666 (R-324)